

# Emerging Regulations and Nitrogen Management Planning Central Valley Water Board

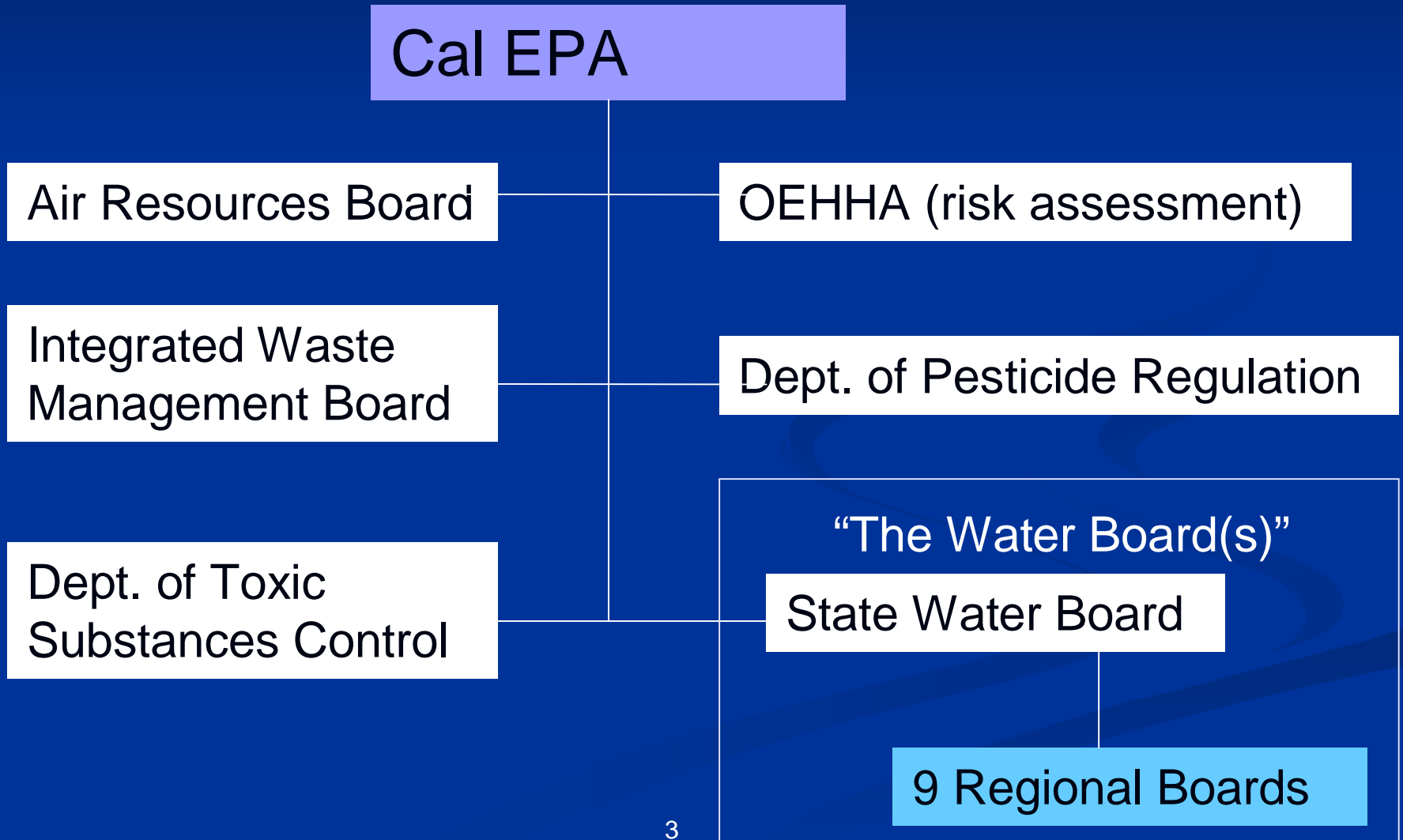


# Presentation Overview

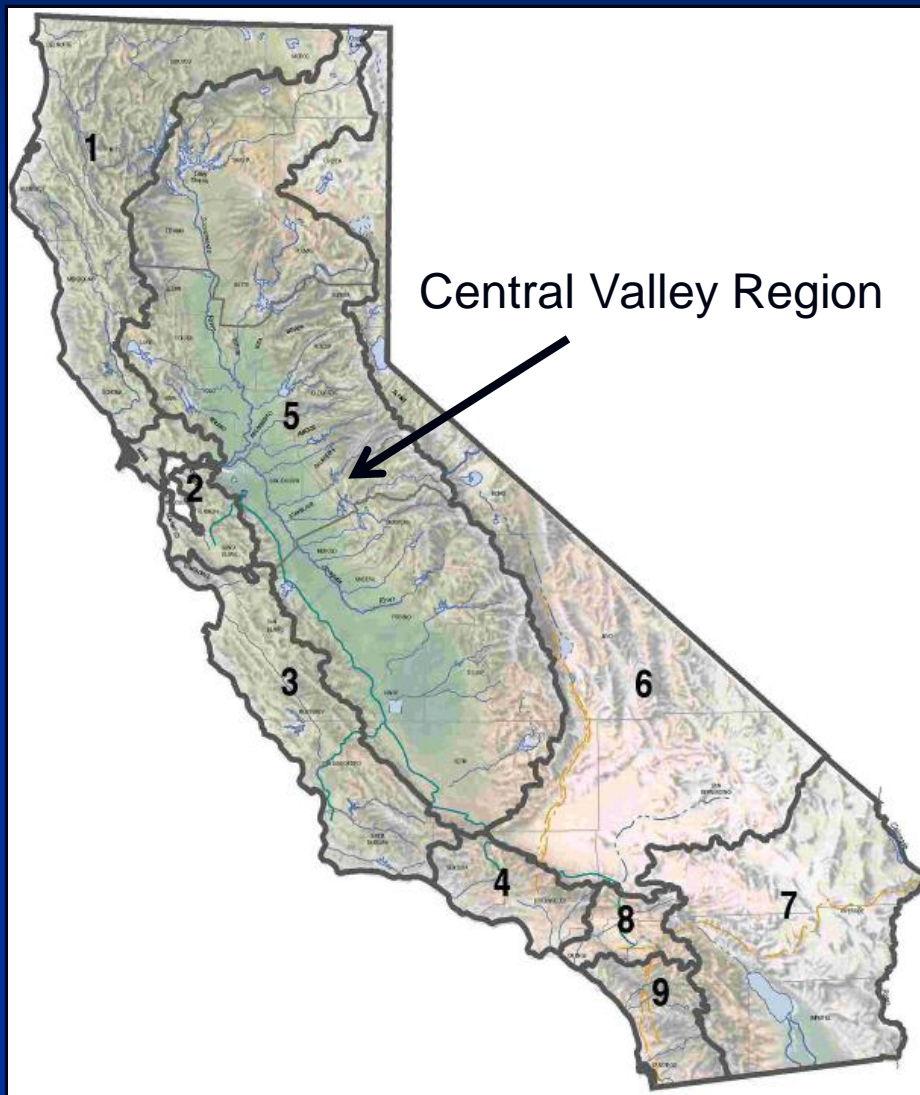
- Who and What is the “Water Board”
- Objectives and Authorities
- “Long Term” ESJ Coalition Grower Requirements
- “Darts and Arrows” (AKA – Questions)

# What is the “Water Board

## CALIFORNIA’S ENVIRONMENTAL AGENCIES



# Nine Regional Water Boards

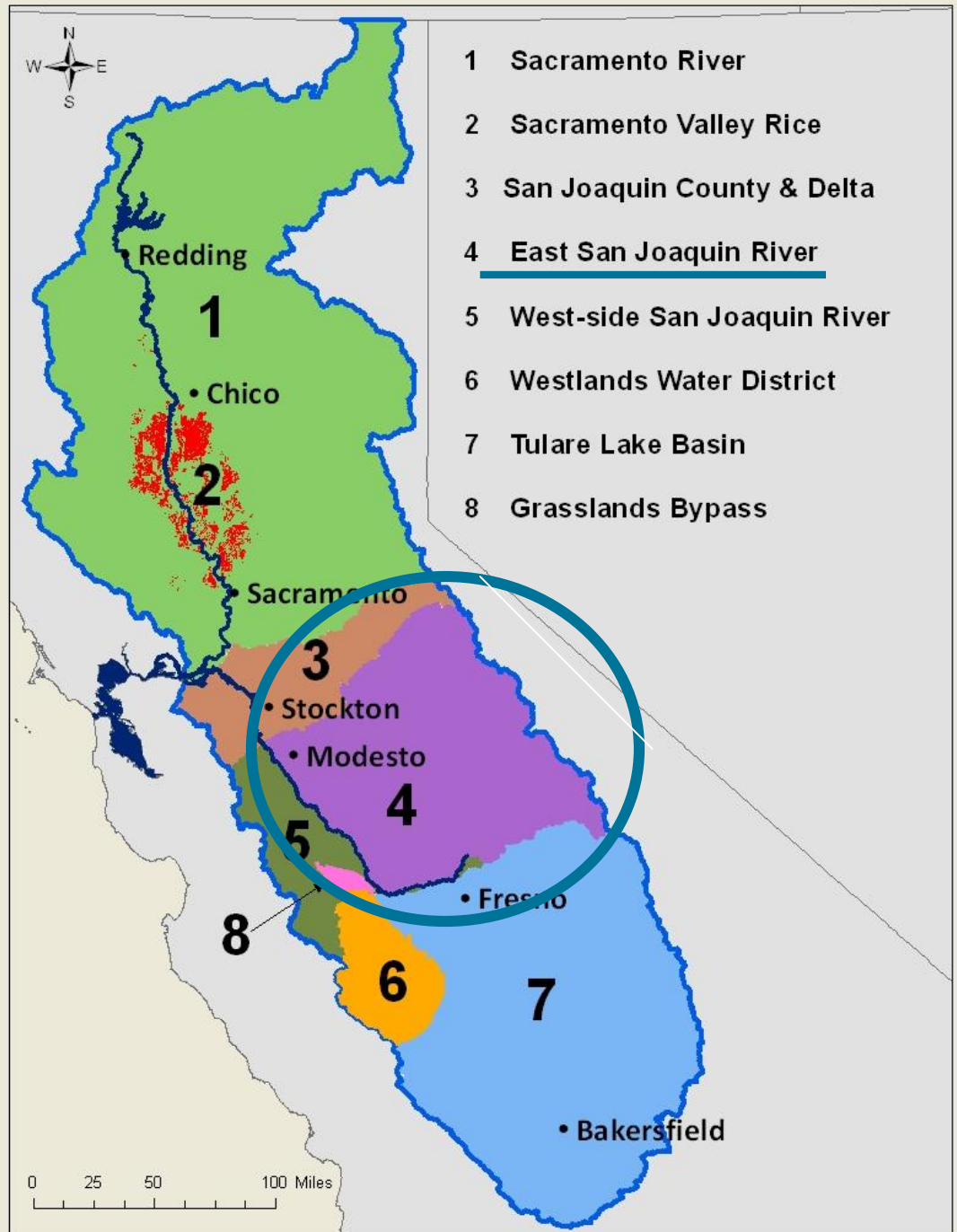


- Central Valley Region
- Implement State and federal water quality laws based on region specific conditions
- Regulate discharges of waste

# Watershed Areas (Coalitions)

## East San Joaquin River Water Quality Coalition

East of the San Joaquin River  
Stanislaus, Merced, Madera,  
and foothill Counties



# Water Boards' Authorities

## Federal

- Clean Water Act
  - National Pollutant Discharge Elimination System Permits (NPDES)
  - 303(d) list of impaired waters
  - Total Maximum Daily Loads (TMDLs) for impairing pollutants

# Water Boards' Authorities

## State

- Porter-Cologne Water Quality Control Act  
(AKA - CA Water Code)

### Applies to:

- “Waters of the state” – any surface water or groundwater
- Discharges of waste to waters of the state
- Waste Discharge Requirements (WDRs)
- Conditional waivers of WDRs

# Water Boards' Authorities

## ■ Basin Plans

Set local water quality objectives within the Region

- TMDLs - Allocated between urban and agricultural sources
- Numeric water quality objectives for some pesticides, ammonia, and turbidity have been adopted
- Regulatory Requirements have been put in place (e.g., pesticide management plans must be submitted)
- Amendments have been implemented to compliment DPR/US EPA pesticide use regulations



# Irrigated Lands Regulatory Program

- 2003 Program - Surface water protection program only
- “Long Term” Program
  - ESJ Coalition adopted Dec 7, 2012
  - Other Coalitions by end of 2013 / mid 2014
- Coalition groups provide lead role in interacting with the Water Board
  - 25,000 landowners currently enrolled
  - Five million acres of irrigated land

# Irrigated Lands Regulatory Program (ILRP)

- Includes commercial irrigated cropland, managed wetlands, nurseries, and greenhouses
- Surface water discharges
  - surface return flows, storm runoff, tile drainage
- Groundwater discharges
  - Fertilizer/pesticides moving down soil profile, well head, or backflow

# ENROLLMENT OPTIONS

- You do not need coverage if:
  - Your commercial lands are covered under the General Order for Existing Milk Cow Dairies or NPDES Dairy General Order
  - Your property is not irrigated or commercial agriculture

# ENROLLMENT OPTIONS

- Coalition enrollment deadline
  - Join a coalition by May 13, 2013
  - Landlord or tenant may enroll the parcel(s)
  - After that date, landowner must apply to the Water Board to join a coalition and additional fees will apply

## ENROLLMENT OPTIONS

- Or ... Obtain coverage under the General WDR as an individual grower
  - (anticipated adoption of this coverage expected May 2013)
  - Costs and requirements anticipated to be the same as an individual permit

## ENROLLMENT OPTIONS

- Or ... Obtain an individual permit
  - Apply to have your own WDR
    - Monitoring runoff, monitoring wells, technical reports
    - Costs would include administrative fees (example a 10-100 acre = \$750+\$5/acre), plus monitoring and reporting costs.

# Irrigated Lands Regulatory Program

## 4 Main Grower Requirements

(ESJ Coalition at this time)

- Continue / enroll in ILRP
  - All commercial irrigated cropland (not already in another permit)
- Farm Evaluation Plan
- Nitrogen Management Plan
- Sediment and Erosion Plan

# Irrigated Lands Regulatory Program

## 4 Main Parts

- Program Requirements vary by
  - Small (<60 ac) or large (60+ ac) farms
  - Low / High vulnerability surface water
  - Low / High vulnerability ground water
  - Sediment and erosion potential



# What's Next?

*Implementation begins with the adoption of the Eastern San Joaquin River Watershed Order*

*Other geographic areas and rice should have Orders adopted within a year*

# Questions?

*ILRP information: 916-464-4611*

*<http://www.waterboards.ca.gov/centralvalley>*